

And by decreasing the wavelength (-3) we obtain the results shown in table (19) and figure (24) .

Table (19): Results of robustness regarding wavelength (-3)

| Parameters | Wavelength (285 nm) | | Wavelength (282 nm) | |
|--------------------|---------------------|-----------|---------------------|-----------|
| | Esomeprazol | Tadalafil | Esomeprazole | Tadalafil |
| Area | 1299576 | 1044488 | 1317245 | 1182444 |
| RSD% | 0.28 | 1.19 | 0.86 | 0.68 |
| Theoretical plates | 9016 | 9907 | 3851 | 4447 |
| Asymmetry | 1.06 | 1.027 | 1.15 | 1.09 |
| Resolution | N.A | 4.18 | N.A | 2.74 |

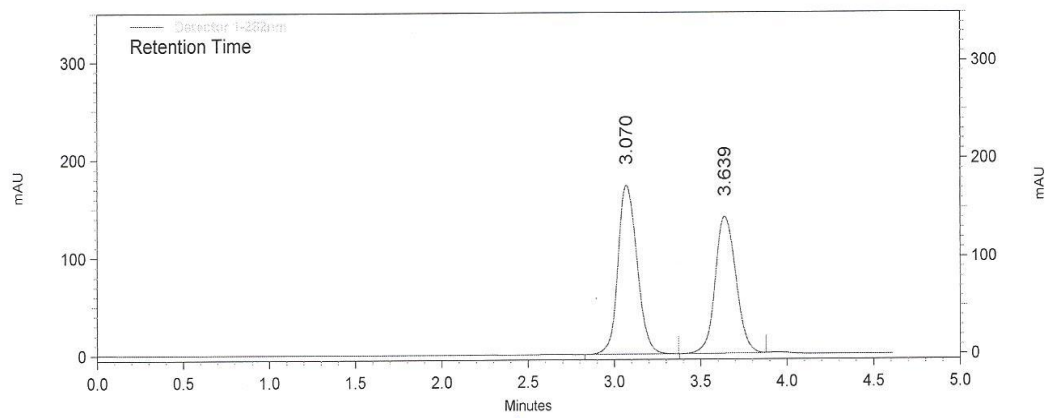


Figure 24: Chromatogram of robustness regarding wavelength 282nm.